

## This is the VapeShell

The VapeShell is Atmizone's RBA bridge concept for Billet Box rev4 Boro tank and compatible tank systems.

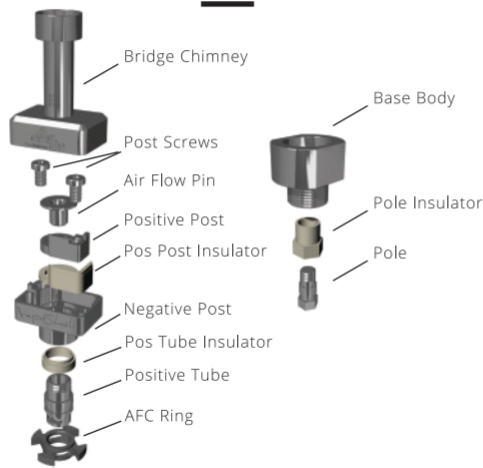
## What's in the box

- 1 x VapeShell RBA bridge with aux 510 base
- 1 x Bag of spares (four classic air flow pins, 2 extra post screws)
- 1 x User Guide
- 1 x Warranty Card

## Features and specs

- Air flow tuning via four Air Flow Pins, D2.0/2.5/3.0/3.5mm and no pin air flow D4.0mm. Air flow fine adjustment with AFC Ring.
- M2.5mm pan head phillips post screws.
- 12.0mm post-to-post length, 10.2mm post-to-post net space, 8.8mm net coiling space.
- Two 2.5mm liquid intake holes at the bottom of the deck.
- Max. net coiling height in the chamber ~5.5mm.
- Max. Boro liquid capacity 4ml, recommended ~3.5ml

## The parts of the VapeShell



## From the box into the Billet Box



**TIP** Add a tad bit of e-liquid around the Pin before inserting it. Pin is held into place by friction with the hosting walls but also by the affinity forces developed this way, like a "lose grip glue".

**TIP** Unscrew a few turns of both the post screws. This provides the free space needed for the pin to pass through (either way in or out).

Coiling time. Fasten your coil down on the posts.

**TIP** Make sure you align the axis of your coil with the imaginary line which connects the two liquid intake holes at the bottom of the deck. This will make wicking a piece of cake.

**TIP** Better orient the legs of the coil downside. This will allow a. the cotton to cover the legs and b. to position the coil closer to air flow.

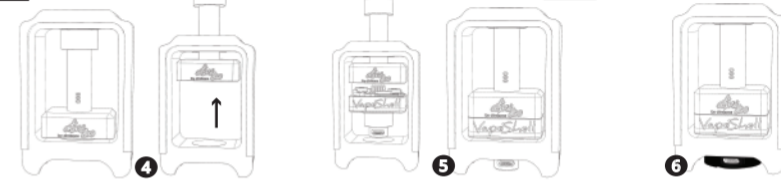
## From the box into the Billet Box



**TIP** Do not stuff the edges inside the liquid intake holes and do not leave them hovering away from them. First will cause dry hit, second flooding.

**TIP** Use a pointy tool to neatly arrange the cotton edges, slightly pushing them off the liquid holes from beneath the Negative Post.

## From the box into the Billet Box



**TIP** Make sure you have added some e-liquid to the Boro tank o-ring (top hole). This will act as a lubricant and prevent damages. Still need to be gentle though.

Place deck inside the Boro (logo side front), right over the bottom hole. Push Chimney gently all the way down to meet deck. The two valves of the VapeShell are now joined and the VapeShell is in place inside the Boro. Slide glass up, place AFC Ring around the Pos Tube and then full Boro into the Billet Box.

**TIP** Having lubricated the o-rings of the Boro with some e-liquid always helps.

Screw in 510 Adapter of your Billet to hold everything into place. Slide tank glass down, add e-liquid and then swiftly slide glass up. Adjust AFC Ring to regulate air flow. Ready to vape!

**TIP** With VapeShell installed, Boro's max capacity is 4ml. Better reach up to 3.5ml though.

**TIP** Top up and slide glass up right afterwards, to avoid leaks.

**TIP** Flight mode: Billet upside down!



## Warnings

### Precautions

- Please read the user manual and warnings carefully before first use.
  - Keep the VapeShell dry from water.
  - Make sure the parts of the VapeShell are safely and steadily assembled to each other.
  - Only use this device for vaporisation of e-liquid from trusted sources.
  - Only use the VapeShell with Billet Box Boro rev4 or compatible tank systems.
  - The VapeShell can be damaged when used at very high voltages or without e-liquid.
  - The VapeShell should only be used for rebuilding only with materials and tools that are made for this purpose.
  - Your built should be renewed periodically.
  - The VapeShell should be cleaned periodically with mild, non abrasive substances.
  - Don't use the device with AFC Ring adjustment fully closed (off).
  - Don't use the device if defective or deformed in whole or in part.
- Storage**  
Store away from high temperature or low temperature, away from direct sun and high humidity. Store in dry place. Store away from children.

**Electronic cigarette is intended for use by adults only. Using an electronic cigarette without medical consent is not recommended for non-smokers and nonadults.**

### Safety

If the product is used with nicotine containing replacement liquid. The replacement fluid is not intended for ingestion. Do not allow the liquid to come into contact with the skin. Keep your appliance in accordance with good hygiene practices. Get medical help immediately if you experience nausea or vomiting while using your electronic cigarette. The electronic cigarette refill fluids should not be mixed with any other liquids or substances. Do not use the electronic cigarette device when driving. To avoid possible overdose of nicotine, electronic cigarette should not be used concurrently with other sources of nicotine (traditional cigarettes, cigars, pipe, patches, nasal sprays, etc.). The liquid should not be released into the environment and should not be discharged into drains.

7



## Warnings

### Risk group warnings

If the product is used with nicotine containing replacement liquid - Do not inhale the vapor produced if you are allergic to nicotine or any of its components. If you have any health problems or if any nuisance occurs when using an electronic cigarette, consult a doctor. Smoking and use of an electronic cigarette is not recommended during pregnancy or breast-feeding. Using the electronic cigarette from an early age can cause serious damage to health. Nicotine can be very dangerous and sometimes fatal if used or swallowed by young children. Consult a doctor before using during pregnancy.

### Contraindications

If the product is used with nicotine-containing replacement liquid. It is not recommended for use in individuals who are hypersensitive to nicotine or constituents, pregnancy, lactation, cardiovascular insufficiency. Nicotine should be used with caution by people diagnosed with: moderate to severe liver disease, severe kidney disease, heart disease including angina pectoris, heart failure, very high blood pressure, problems with heart rate or pulse, who have suffered a recent heart attack or stroke, hyperthyroidism, diabetes, inflammation of

the inflammation of the esophagus (tube between mouth and stomach), inflammation of the stomach (gastritis), stomach ulcer, duodenal ulcer, skin problems, long-term throat problems, difficulty in breathing due to bronchitis, emphysema or asthma, pregnancy and breastfeeding.

### Unwanted actions

If the product is used with nicotine-containing replacement liquid. Systemic symptoms that can be observed when using nicotine replenishment fluids: nausea and vomiting, sleep disturbances, headache, chest pain due to nicotine toxicity. Mild to moderate toxicity: Gastrointestinal disorder, nausea, vomiting, dizziness, headache, tremor, sweating, irregular heartbeat or tachycardia, paleness, and hypertension are common symptoms. Severe toxicity: Seizures, dizziness, weakness, bradycardia, hypotension and respiratory or muscular paralysis may occur. Symptoms may typically occur within 30 minutes to 2 hours after an oral report. Symptoms may be immediate after inhalation of nicotine. Nicotine is an extremely addictive substance.

8



## Warnings

If you have any side effects or a child under 12 years accidentally swallows a nicotine-containing preparation, contact IMMEDIATELY with your local doctor or emergency department. Tel. Poison Center: +30 210 77937777.

*atmizoo*  
by atmizone

© 2017 Atmizone - Producer

THEODOROU D PSYCHOGYIPOULOS AN GP - Atmizone

Kyprion Agoniston 36, Alimos, Attica, 17456, Greece

www.atmizoo.com / www.atmitude.com, tel: +30 2130 358743

e-mail: support@atmizoo.com / support@atmitude.com



9

*atmizoo*  
by atmizone

# VapeShell

*atmizoo*  
by atmizone

user manual