



# Tripod

user manual

# This is the Tripod

The Tripod is Atmizone's new approach to 22mm RTA design for single coil setups. It offers an unparalleled vaping experience focusing on performance, versatility and ergonomics. With its enhanced flavor and vapor production, potential for variable specs, instant real time access to deck, instant top refill system, easy rebuilding and attention to details, the Tripod is one step ahead of most RTAs out there.

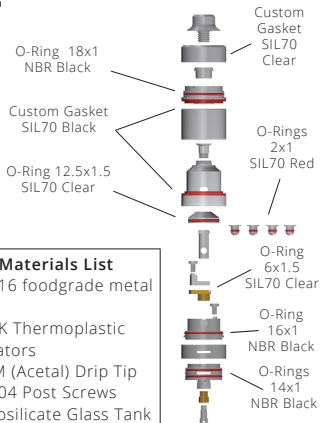
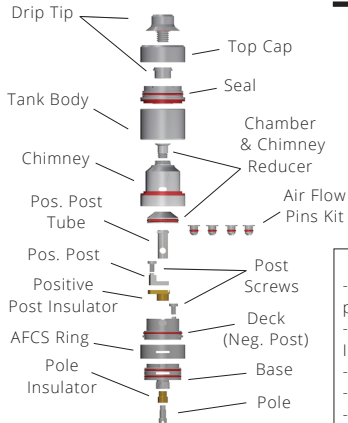
## What's in the box

- **1 x Tripod RTA** (1 x Chamber & Chimney Reducer pre-installed)
- **1 x Set of spares** (2 x Post Screws, 1 x O-ring Kit, 1 x Tank Body, 1 x AF Pins Kit)
- **1 x Set of User Guide / Warranty Card**

## Features and specs

- **Air flow tuning** via 4 pin options with air hole D=1.0mm/1.2mm/ 1.5mm/1.8mm pinned inside a D=4.0mm nest or via an AFCS Ring adjusting from zero to D=4.0mm.
- M2.5mm pan head phillips **post screws**.
- Two parts screw-in custom **Drip Tip** / inner D=4.0mm, can also host any 510 drip tip.
- 10.0mm **post-to-post space**, ~6.6mm **post-to-post net space**, ~5.8mm **coil space**.
- **Tank capacity** 2ml.
- Max. **net coiling height** ~9.0mm (C & C Reducer out) / ~5.3mm (C & C Reducer in)
- **Chimney top inner D** ~5.2mm (C & C Reducer out) / ~3.0mm (C & C Reducer in)
- **Height** 510 excl., 39mm [Drip Tip off] / 47.0mm [Drip Tip on] / **Weight** ~56g

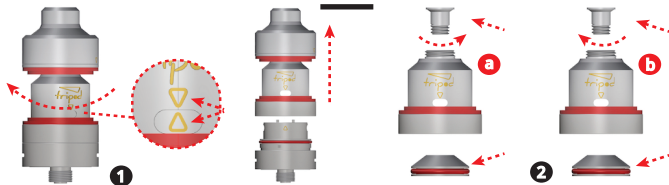
# The parts of the Tripod



## Materials List

- SS316 foodgrade metal parts
- PEEK Thermoplastic Insulators
- POM (Acetal) Drip Tip
- SS304 Post Screws
- Borosilicate Glass Tank

## Vaping on the Tripod



Unlock the tank section and pull up to reveal the deck.

**TIP** To do this, rotate tank section on Base - Deck assembly (preferably clockwise), until you align the triangle that is engraved on chimney with the triangle engraved on Deck side. Deck triangle lies right where the liquid slots are, just need to rotate in order to find it. Hold tank section firmly and pull up, making sure the triangles are still aligned.

**TIP** When removing a full tank to access deck, do the above after turning upside down.

English

Time to decide if you are vaping with the Chamber & Chimney Reducer installed or not.

**TIP** The C&C R. is pre-installed. This creates a vaporization chamber with lower volume and a chimney with 3.0mm inner D, focusing on flavour oriented setups rather than vapour production. If you need it inside, skip this step.

**TIP** The C&C R. parts are sandwiching the top Chimney part. To remove them 1. Consult step 6 to remove top cap, 2. Unscrew the top C&C part with a fitting flathead screw driver, holding the bottom C&C part still with your fingers (2a). Reverse to re-assemble (2b).

## Vaping on the Tripod



Air flow Pins and Ring.

**TIP** You can regulate air flow in two ways. 1. pin the air flow pin of your choice inside its Pos Post Tube nest or 2. adjust the AFC Ring

**TIP** Add a bit of juice around the pin o-ring. To insert the air flow pin, you need to unscrew a few turns of both the Post Screws. This will allow free space for the pin to pass through, way in or out (3a).

**TIP** Adjust the AFC Ring from zero to a fully open D=4mm (3b).

**TIP** AFC Ring has a stop point. This helps to fully screw or unscrew Tripod on a 510 thread.

English

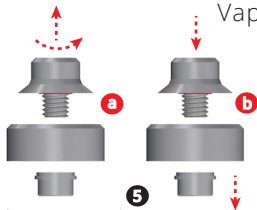
Coiling! Fasten your coil down on the posts.

**TIP** The two small, half circle cut outs on the rims of the Deck are there for you to align the coil properly. They also allow some extra space if you need to lower your setup right above the air hole.

**TIP** Better orient the legs of the coil downside. This will allow a. the cotton to cover the legs and b. to position the coil closer to air flow.

**TIP** On to wicking. Use the desired cotton quantity, trim and place cotton edges inside the juice well. Amount of cotton depends on your vaping profile.

## Vaping on the Tripod

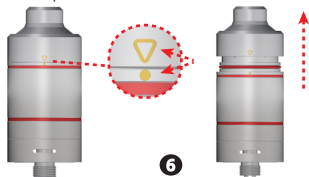


About your mouth piece.

**TIP** You may use either the custom Drip Tip that comes pre-installed or replace it with any 510 type drip tip of your choice.

**TIP** The pre-installed Drip Tip is a two - parts assembly. The two parts are sandwiching the Top Cap for extra stability. To remove them, unscrew the top Tip part with your fingers, holding the bottom part still (2a). Push bottom Tip part down with the help of the unscrewed top part (2b). This will also pop the custom SIL gasket off its Top Cap nesting groove, so gently put it back in place.

English



Refilling the Tripod.

**TIP** Always shut off liquid intake slots before refilling. To do this, rotate tank section on Base until side slots of Chimney are quite far from deck liquid slots right beneath.

**TIP** To refill, rotate Top Cap on Seal, until you align the triangle that is engraved on Top Cap side with the dot engraved on Seal rim. Then pull up gently. Refill through the Seal slots and reverse the above steps to assemble back for use. Always prefer to operate Top Cap clockwise, either to remove or to replace, to avoid accidental unscrewing of tank section assembly.



# Warnings

## Precautions

- Please read the user manual and warnings carefully before first use.
- Keep the Tripod dry from water.
- Make sure the parts of the Tripod are safely and steadily assembled to each other.
- Only use this device for vaporisation of e-liquid from trusted sources.
- Only use the Tripod with 510 type battery holders.
- The Tripod can be damaged when used at very high voltages or without e-liquid.
- The Tripod should only be used for rebuilding only with materials and tools that are made for this purpose.
- Your built should be renewed periodically.
- The Tripod should be cleaned periodically with mild, non abrasive substances.
- Don't use the device with AFC Ring adjustment fully closed (off).
- Don't use the device if defective or deformed in whole or in part.

## Storage

Store away from high temperature or low temperature, away from direct sun and high humidity. Store in dry place. Store away from children.

**Electronic cigarette is intended for use by adults only. Using an electronic cigarette without medical consent is not recommended for non-smokers and nonadults.**

## Safety

If the product is used with nicotine containing replacement liquid. The replacement fluid is not intended for ingestion. Do not allow the liquid to come into contact with the skin. Keep your appliance in accordance with good hygiene practices. Get medical help immediately if you experience nausea or vomiting while using your electronic cigarette. The electronic cigarette refill fluids should not be mixed with any other liquids or substances. Do not use the electronic cigarette device when driving. To avoid possible overdose of nicotine, electronic cigarette should not be used concurrently with other sources of nicotine (traditional cigarettes, cigars, pipe, patches, nasal sprays, etc.). The liquid should not be released into the environment and should not be discharged into drains.



# Warnings

---

## **Risk group warnings**

If the product is used with nicotine containing replacement liquid - Do not inhale the vapor produced if you are allergic to nicotine or any of its components. If you have any health problems or if any nuisance occurs when using an electronic cigarette, consult a doctor. Smoking and use of an electronic cigarette is not recommended during pregnancy or breast-feeding. Using the electronic cigarette from an early age can cause serious damage to health. Nicotine can be very dangerous and sometimes fatal if used or swallowed by young children. Consult a doctor before using during pregnancy.

## **Contraindications**

If the product is used with nicotine - containing replacement liquid.  
It is not recommended for use in individuals who are hypersensitive to nicotine or constituents, pregnancy, lactation, cardiovascular insufficiency.  
Nicotine should be used with caution by people diagnosed with: moderate to severe liver disease, severe kidney disease, heart disease including angina pectoris, heart failure, very high blood pressure, problems with heart rate or pulse, who have suffered a recent heart

attack or stroke, hyperthyroidism, diabetes, inflammation of the esophagus (tube between mouth and stomach), inflammation of the stomach (gastritis), stomach ulcer, duodenal ulcer, skin problems, long-term throat problems, difficulty in breathing due to bronchitis, emphysema or asthma, pregnancy and breastfeeding.

## **Unwanted actions**

If the product is used with nicotine-containing replacement liquid.

Systemic symptoms that can be observed when using nicotine replenishment fluids: nausea and vomiting, sleep disturbances, headache, chest pain due to nicotine toxicity. Mild to moderate toxicity: Gastrointestinal disorder, nausea, vomiting, dizziness, headache, tremor, sweating, irregular heartbeat or tachycardia, paleness, and hypertension are common symptoms. Severe toxicity: Seizures, dizziness, weakness, bradycardia, hypotension and respiratory or muscular paralysis may occur. Symptoms may typically occur within 30 minutes to 2 hours after an oral report. Symptoms may be immediate after inhalation of nicotine. Nicotine is an extremely addictive substance.





## Warnings

---

If you have any side effects or a child under 12 years accidentally swallows a nicotine-containing preparation, contact IMMEDIATELY with your local doctor or emergency department. Tel. Poison Center: +30 210 77937777.

---

*atmizoo*  
by atmizone

© 2019 Atmizone - Producer  
THEODOROU D PSYCHOGYIOPOULOS AN GP - Atmizone  
Kyprion Agoniston 36, Alimos, Attica, 17456, Greece  
[www.atmizoo.com](http://www.atmizoo.com) / [www.atmitude.com](http://www.atmitude.com), tel: +30 2130 358743  
e-mail: [support@atmizoo.com](mailto:support@atmizoo.com) / [support@atmitude.com](mailto:support@atmitude.com)





Visit our support section for useful tips and tricks  
[www.atmizoo.com/support/support-tripod](http://www.atmizoo.com/support/support-tripod)