

## This is the Tripod

The Tripod is Atmizone's new approach to 22mm RTA design for single coil setups. It offers an unparalleled vaping experience focusing on performance, versatility and ergonomics. With its enhanced flavor and vapor production, potential for variable specs, instant real time access to deck, instant top refill system, easy rebuilding and attention to details, the Tripod is one step ahead of most RTAs out there.

## What's in the box

- 1 x Tripod RTA (1 x Chamber & Chimney Reducer pre-installed)
- 1 x Set of spares (2 x Post Screws, 1 x O-ring Kit, 1 x Tank Body, 1 x AF Pins Kit)
- 1 x Set of User Guide / Warranty Card

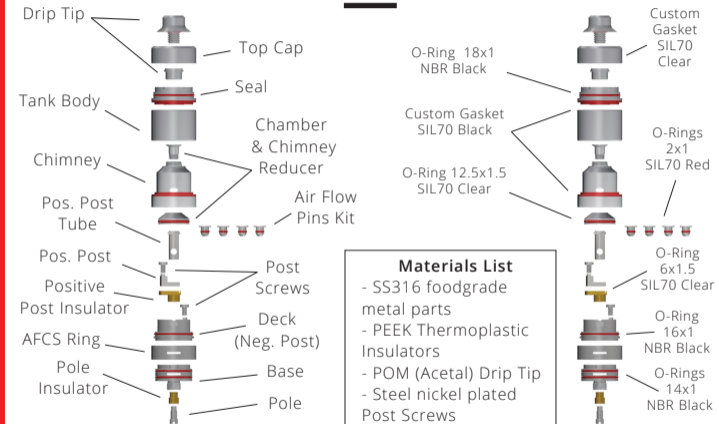
## Features and specs

- **Air flow tuning** via 4 pin options with air hole D=1.0mm/1.2mm/ 1.5mm/1.8mm pinned inside a D=4.0mm nest or via an AFCS Ring adjusting from zero to D=4.0mm.
- M2.5mm pan head phillips **post screws**.
- Two parts screw-in **Drip Tip** / inner D=4.0mm, can also host any 510 drip tip.
- 10.0mm **post-to-post space**, ~6.6mm **post-to-post net space**, ~5.8mm **coil space**.
- **Tank capacity** 2ml.
- Max. **net coiling height** ~9.0mm (C & C Reducer out) / ~5.3mm (C & C Reducer in)
- **Chimney top inner D** ~5.2mm (C & C Reducer out) / ~3.0mm (C & C Reducer in)
- **Height** 510 excl., 39mm [Drip Tip off] / 47.0mm [Drip Tip on] / **Weight** ~56g

English

2

## The parts of the Tripod



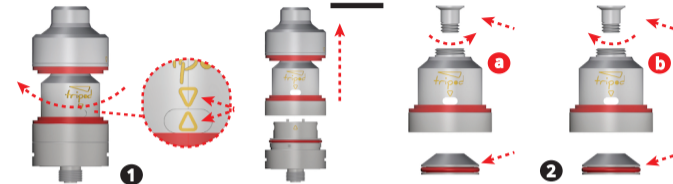
English

3

### Materials List

- SS316 foodgrade metal parts
- PEEK Thermoplastic Insulators
- POM (Acetal) Drip Tip
- Steel nickel plated Post Screws

## Vaping on the Tripod



Unlock the tank section and pull up to reveal the deck.

**TIP** To do this, rotate tank section on Base - Deck assembly (preferably clockwise), until you align the triangle that is engraved on chimney with the triangle engraved on Deck side. Deck triangle lies right where the liquid slots are, just need to rotate in order to find it. Hold tank section firmly and pull up, making sure the triangles are still aligned.

**TIP** When removing a full tank to access deck, do the above after turning upside down.

English

4

## Vaping on the Tripod



Air flow Pins and Ring.

**TIP** You can regulate air flow in two ways. 1. pin the air flow pin of your choice inside its Pos Post Tube nest or 2. adjust the AFC Ring

**TIP** Add a bit of juice around the pin o-ring. To insert the air flow pin, you need to unscrew a few turns of both the Post Screws. This will allow free space for the pin to pass through, way in or out (3a).

**TIP** Adjust the AFC Ring from zero to a fully open D=4mm (3b).

**TIP** AFC Ring has a stop point. This helps to fully screw or unscrew Tripod on a 510 thread.

English

5

Coiling! Fasten your coil down on the posts.

**TIP** The two small, half circle cut outs on the rims of the Deck are there for you to align the coil properly. They also allow some extra space if you need to lower your setup right above the air hole.

**TIP** Better orient the legs of the coil downside. This will allow a. the cotton to cover the legs and b. to position the coil closer to air flow.

**TIP** On to wicking. Use the desired cotton quantity, trim and place cotton edges inside the juice well. Amount of cotton depends on your vaping profile.

English

6

## Vaping on the Tripod



About your mouth piece.

**TIP** You may use either the custom Drip Tip that comes pre-installed or replace it with any 510 type drip tip of your choice.

**TIP** The pre-installed Drip Tip is a two - parts assembly. The two parts are sandwiching the Top Cap for extra stability. To remove them, unscrew the top Tip part with your fingers, holding the bottom part still (2a). Push bottom Tip part down with the help of the unscrewed top part (2b). This will also pop the custom SIL gasket off its Top Cap nesting groove, so gently put it back in place.

Refilling the Tripod.

**TIP** Always shut off liquid intake slots before refilling. To do this, rotate tank section on Base until side slots of Chimney are not aligned with deck liquid slots right beneath.

**TIP** To refill, rotate Top Cap on Seal, until you align the triangle that is engraved on Top Cap side with the dot engraved on Seal rim. Then pull up gently. Refill through the Seal slots and reverse the above steps to assemble back for use.

English