

*atmizoo*  
by atmizone

# DotShell

user manual

# This is the DotShell

Meet the DotShell, Atmizone's dedicated RTA for the dotAIO by Dotmod. Based on the VapeShell, yet taking quite some steps forward, the DotShell introduces all features of RTAs to the world of AIO devices. The DotShell utilizes the top part of dotAIO's stock reservoir, incorporates an adaptation of dotAIO RBA's afc system, but also offers a surprisingly large deck with real time access potential and further customisable air flow under coil, bringing the already succesful dotAIO to another level.

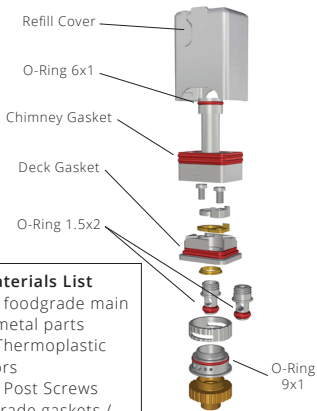
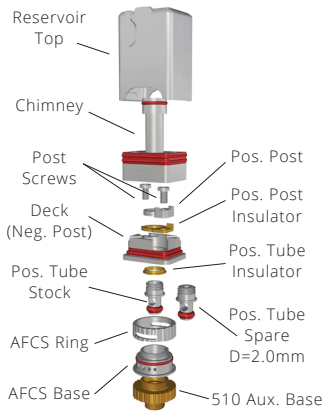
## What's in the box

- **1 x DotShell RTA** (incl. dotAIO stock aux 510 Rebuild Base and Reservoir Top)
- **1 x Set of spares** (2 x Post Screws, 1 x O-ring Kit, 1 x Pos. Tube D=2.0mm)
- **1 x Set of User Manual / Warranty Card**

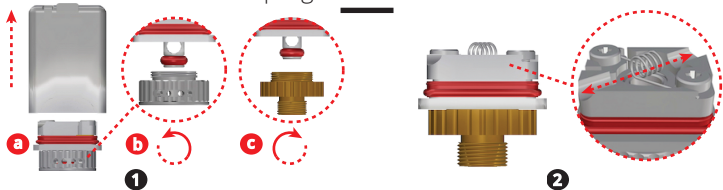
## Features and specs

- **Air flow tuning** via an AFCS Ring adjusting from zero to either D=3.8mm (stock Pos Tube) or D=2.0mm (spare Pos. Tube). Fine tuning with **accessory** MTL pins kit D=1.0/1.2/1.5mm
- M2.5mm pan head phillips **post screws**.
- 12.2mm **post-to-post length**, ~8.5mm **post-to-post net space**, ~8.0mm **coil space**.
- Max. **net coiling height** in the chamber 4.2mm
- **Chimney top inner D** ~4.0mm
- **Height** ~35mm [AFC section attached, Rebuild Base excl.] / **Weight** ~25g [AFCS section attached, Rebuild Base excl.]

# The parts of the DotShell



## Vaping on the DotShell



Grip on the tank section and pull up to access the deck. Unscrew AFCS section off the deck and screw the 510 Aux Base until fully in place.

**TIP** Before removing a full tank to access deck, you have to turn the DotShell upside down. If not, the liquid will pour through the liquid holes, which are placed at bottom of the tank section / ceiling of Chimney.

**TIP** The tank section is attached on the deck only via friction of the Deck Gasket. Always keep the DotShell upside down when out of the dotAIO with a full Reservoir.

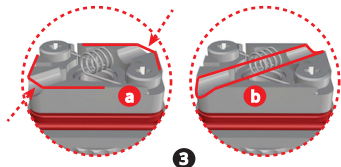
Coiling! Fasten your coil down on the posts.

**TIP** The two diagonal, half tube leads on the Deck will help you align the coil properly. Just place your coiling rod along the channel of the leads and then fasten your coil.

**TIP** Better orient the legs of the coil downside. This will allow a. the cotton to cover the legs and b. to position the coil closer to air flow.

**TIP** You might need to adjust the height of the coil after fastened (eg raise it a tad bit if you have placed an MTL AF pin [accessory kit] inside the Pos Tube.

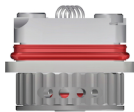
## Vaping on the DotShell



On to wicking. Use the amount of cotton you want based on your setup and coil.

**TIP** Trim your cotton along the rims of the deck, making sure you don't leave any remains out of the deck perimeter (3a). Also trim any protruding part off the end of the deck channels (3a arrow signs).

**TIP** These two diagonal, half tube leads on the Deck are again there to serve as cotton nests. After fluffed and primed, cotton should be neatly nested inside the deck channels (3b) with the help of a pointy tool. Make sure you don't leave any cotton outside the channel.



Air flow adjustment. Reverse step 1 to put AFCS section back in place.

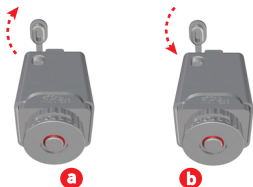
**TIP** Air flow is tuned via the AFCS Ring but also depends on the Pos Tube you will select. Stock Pos Tube (preinstalled) is suggested for more open RDL / DL vaping but also serves as a nest for the MTL AF pins [accessory kit]. Spare Pos Tube allows a max of  $D=2.0\text{mm}$  air hole, thus better for loose MTL / tight RDL vaping.

**TIP** AFCS section features 4 double (mirrored) air holes. Rotate AFCS Ring to uncover more or less holes.

## Vaping on the DotShell

Uncovered AFC hole	Equivalent of single hole diameter under coil (mm)
1st	1.4
1st and 2nd	2.3
1st, 2nd and 3rd	3.1
all holes uncovered	3.8

Chart 1. AFCS Ring tuning guide



5

Refilling the DotShell.

**TIP** It is suggested to refill the Reservoir only when the DotShell is inserted into the dotAIO. This ensures that the tank section will be securely attached to the deck section.

**TIP** To refill, open the liquid port by lifting the refill cover. Top up, then secure the refill cover back into place.