

# Creek

user manual

# This is the Creek

---

Atmizone introduces the **Creek**, our new 22mm RDA for ideal single-coil setups. Squonk-ready out of the box, the Creek also includes both MTL and DL oriented options in the package. What's more: Its design allows juice bottom feed, while at the same time driving air right under the coil.

## What's in the box

---

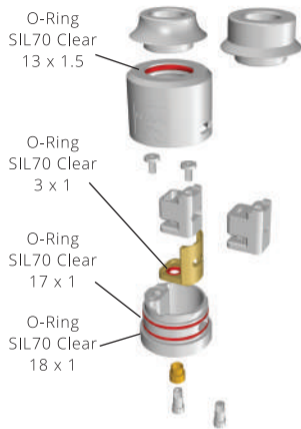
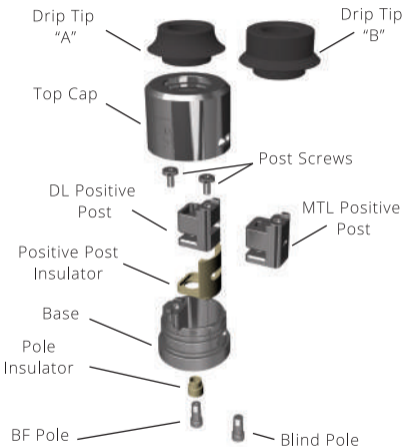
- **1 x Creek BF RDA** (1 x MTL Pos Post, 1 x BF Pole, 1 x "A" Drip Tip pre-installed)
- **1 x Set of spares** (2 x Post Screws, 1 x O-ring Kit, 1 x Blind Pole, 1 x DL Pos Post, 1 x Hex Key 2mm, 1 x "B" Drip Tip)
- **1 x User Guide**
- **1 x Warranty Card**

## Features and specs

---

- **Air flow tuning** via two Pos Post designs, one DL oriented and one MTL oriented. **Air flow fine adjustment** with Top Cap small (MTL oriented) or large (DL oriented) side slot.
- M2.5mm pan head phillips **post screws**.
- 11.2mm **post-to-post space**, ~7.0mm **post-to-post net space**, ~6.5mm **net coiling space**.
- **Juice well capacity** ~1.2ml
- Max. **net coiling height** in the chamber ~5.5mm.
- **Height** 27.0mm [top to bottom, 510 excl., tip "A" installed] / **Height** 29.0mm [top to bottom, 510 excl., tip "B" installed] / **Weight** ~38g

# The parts of the Creek



## Get ready to vape upstream



1



2



Unlock the Top Cap and pull up to reveal the deck.

**TIP** To do this, rotate Top Cap on Base until you align the large side slot (DL air flow slot) of the Top Cap with the slot of the Base right beneath. The Top Cap is now in “unlock” position. Hold Base firmly and pull the Top Cap up, making sure the slots are still aligned.

**TIP** You may rotate either clockwise or anti-clockwise.

Time to decide if you are going squonk mode or dripper mode. Pole for squonk or dripping?

**TIP** Out of the box, the Creek comes with the MTL oriented Pos Post pre-installed, also the BF (squonk) Pole pre-installed. If you are fine with this, proceed straight to step 4.

**TIP** To remove the BF Pole, use the hex key included in the package to unscrew it. Just insert it bottom side and unscrew anti-clockwise.

**TIP** If you also need to replace the MTL Pos Post with the DL Pos Post, now is the time for this. If not, just omit step 3.

## Get ready to vape upstream



This is if you need to install the DL Pos Post.

**TIP** Use the tip of your finger to apply a light horizontal force on the top “rails” of the Pos Post, right at the level of the screw head. This will pop the MTL Pos Post off, as well as its insulator.

**TIP** Separate the MTL Pos Post from its insulator nest, and install its DL sibling. No need for tools, bare fingers are fine. Make sure the DL Pos Post sits flush and tight in its insulator nest.

**TIP** Reverse previous steps to install the Pos Post assembly back in its place and secure it with the Pole of your choice.

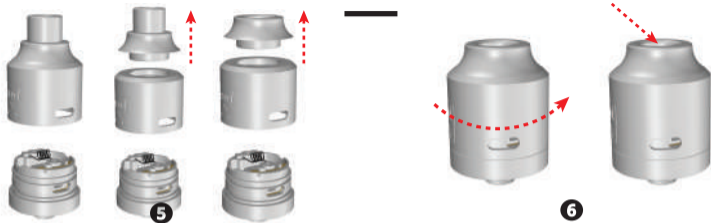
Coiling time. Fasten your coil down on the posts.

**TIP** The two small, half circle cut outs on the rims of the Base are there for you to align the coil properly. They also allow some extra space if you need to lower your setup right above the air hole.

**TIP** Better orient the legs of the coil downside. This will allow a. the cotton to cover the legs and b. to position the coil closer to air flow.

**TIP** On to wicking. Use the desired cotton quantity, trim and place cotton edges inside the juice well. Amount of cotton depends on your personal preferences and vaping profile.

## Get ready to vape upstream



About your mouth piece.

**TIP** You may use drip tip "A" that comes pre-installed or replace it with drip tip "B". Both are wide bore drip tips but also serve as adaptors to put your 510 style drip tip on top.

**TIP** Due to safety regulations, it is hard to pull drip tips "A" and "B" off the Top Cap with just your fingers. There are two easy ways though:

1. Install your 510 drip tip and use it as a lever to remove drip tip "A" or "B"
2. Unlock and pull off the Top Cap, then pushing drip tip "A" or "B" up from beneath.

Last things before you vape.

**TIP** Adjust the airflow by rotating Top Cap On Base. Aligning larger or smaller part of the Top Cap side slot with the Base slot right below, defines how airy or tight your draw is. It is recommended to use the MTL (small) side slot of the Top Cap when the MTL Pos Post is installed, and the DL (large) side slot with the DL Pos Post installed.

**TIP** If you are using the Creek in dripping mode, you may drip either through the wide bore drip tips, or after lifting the Top Cap for more precision.



## Warnings

---

### Precautions

- Please read the user manual and warnings carefully before first use.
- Keep the Creek dry from water.
- Make sure the parts of the Creek are safely and steadily assembled to each other.
- Only use this device for vaporisation of e-liquid from trusted sources.
- Only use the Creek with 510 type battery holders.
- The Creek can be damaged when used at very high voltages or without e-liquid.
- The Creek should only be used for rebuilding only with materials and tools that are made for this purpose.
- Your built should be renewed periodically.
- The Creek should be cleaned periodically with mild, non abrasive substances.
- Don't use the device with AFC Ring adjustment fully closed (off).
- Don't use the device if defective or deformed in whole or in part.

### Storage

Store away from high temperature or low temperature, away from direct sun and high humidity. Store in dry place. Store away from children.

**Electronic cigarette is intended for use by adults only. Using an electronic cigarette without medical consent is not recommended for non-smokers and nonadults.**

### Safety

If the product is used with nicotine containing replacement liquid. The replacement fluid is not intended for ingestion. Do not allow the liquid to come into contact with the skin. Keep your appliance in accordance with good hygiene practices. Get medical help immediately if you experience nausea or vomiting while using your electronic cigarette. The electronic cigarette refill fluids should not be mixed with any other liquids or substances. Do not use the electronic cigarette device when driving. To avoid possible overdose of nicotine, electronic cigarette should not be used concurrently with other sources of nicotine (traditional cigarettes, cigars, pipe, patches, nasal sprays, etc.). The liquid should not be released into the environment and should not be discharged into drains.



## Warnings

---

### **Risk group warnings**

If the product is used with nicotine containing replacement liquid - Do not inhale the vapor produced if you are allergic to nicotine or any of its components. If you have any health problems or if any nuisance occurs when using an electronic cigarette, consult a doctor. Smoking and use of an electronic cigarette is not recommended during pregnancy or breast-feeding. Using the electronic cigarette from an early age can cause serious damage to health. Nicotine can be very dangerous and sometimes fatal if used or swallowed by young children. Consult a doctor before using during pregnancy.

### **Contraindications**

If the product is used with nicotine-containing replacement liquid.

It is not recommended for use in individuals who are hypersensitive to nicotine or constituents, pregnancy, lactation, cardiovascular insufficiency.

Nicotine should be used with caution by people diagnosed with: moderate to severe liver disease, severe kidney disease, heart disease including angina pectoris, heart failure, very high blood pressure, problems with heart rate or pulse, who have suffered a recent heart attack or stroke, hyperthyroidism, diabetes, inflammation of the

esophagus (tube between mouth and stomach), inflammation of the stomach (gastritis), stomach ulcer, duodenal ulcer, skin problems, long-term throat problems, difficulty in breathing due to bronchitis, emphysema or asthma, pregnancy and breastfeeding.

### **Unwanted actions**

If the product is used with nicotine-containing replacement liquid.

Systemic symptoms that can be observed when using nicotine replenishment fluids: nausea and vomiting, sleep disturbances, headache, chest pain due to nicotine toxicity. Mild to moderate toxicity: Gastrointestinal disorder, nausea, vomiting, dizziness, headache, tremor, sweating, irregular heartbeat or tachycardia, paleness, and hypertension are common symptoms. Severe toxicity: Seizures, dizziness, weakness, bradycardia, hypotension and respiratory or muscular paralysis may occur. Symptoms may typically occur within 30 minutes to 2 hours after an oral report. Symptoms may be immediate after inhalation of nicotine. Nicotine is an extremely addictive substance.





## Warnings

---

If you have any side effects or a child under 12 years accidentally swallows a nicotine-containing preparation, contact IMMEDIATELY with your local doctor or emergency department. Tel. Poison Center: +30 210 77937777.

---

*atmizoo*  
by atmizone

© 2018 Atmizone - Producer  
THEODOROU D PSYCHOGYIOPOULOS AN GP - Atmizone  
Kyprion Agoniston 36, Alimos, Attica, 17456, Greece  
[www.atmizoo.com](http://www.atmizoo.com) / [www.atmitude.com](http://www.atmitude.com), tel: +30 2130 358743  
e-mail: [support@atmizoo.com](mailto:support@atmizoo.com) / [support@atmitude.com](mailto:support@atmitude.com)



